



- Flow rates from 0.35 to 12,000 ACFM
- + - 0.10% linearity over full range
- + - 0.25% repeatability
- Temperature range -450 to +450°F standard, +1000°F available
- Compact, lightweight construction
- Linear output
- High resolution
- Standard and custom design
- Variety of end fitting choices

Corrosive Sizing Chart

Nominal	Nominal Flow Range		Extended Flow Range		APPROX.
Meter	ACFM (Mag. Pickup)		ACFM (MC Pickup W/ amp~)		Meter WT.*
Size	Minimum Linear	Maximum Linear	Minimum Linear	Maximum Linear	LBS/Kg
¼	0.35	3.5	0.2	3.5	2/1
3/8	0.75	5.0	0.5	10.0	2/1
½	1.0	10.0	0.8	12.0	2/1
5/8	2.0	20.0	1.5	20.0	2/1
¾	2.5	28.0	2.0	30.0	4/2
1	4	60.0	2.8	60.0	5/2.5
1 ¼	6.0	100.0	4.0	100.0	7/3
1 ½	8.0	130.0	6.0	150.0	8/3.5
2	15.0	250.0	10.0	250.0	13/6
2 ½	25.0	450.0	15.0	500.0	18/8
3	40.0	650.0	--	--	19/8.5
4	75.0	1200.0	--	--	36/6
5	150.0	1800.0	--	--	47/21
6	250.0	2900.0	--	--	58/26
8	330.0	5000.0	--	--	119/54
10	650.0	7500.0	--	--	226/103
12	900.0	12000.0	--	--	345/157

R&W precision turbine gas flowmeters are designed to measure actual cubic feet or actual volume passing through the meter. Before sizing a flowmeter it is necessary to convert flow units (e.g., SCFM, LPM) to actual units. To convert to actual measured volume (ACFM) from standard volume (SCFM) use the formula:

$$ACFM = SCFM * 14.7 / Pa * Ta / 530$$

where ACFM is actual cubic feet per minute measured gas flow, SCFM is standard cubic feet per minute gas flow, Pa is operating pressure in psia (or psig +14.7), and Ta is temperature in degrees Rankine (Fahrenheit plus 460)

*Weight is for flanged meters.

Meter size is based on nominal inside diameter of pipe. Special flanges can usually be provided to specification.

For hazardous areas, pick up coils with explosion proof housings can be provided.

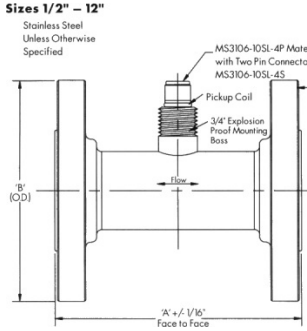
All Flowmeters ½" and smaller will be provided with ½" end fittings unless otherwise specified.

Meter Model Numbering System

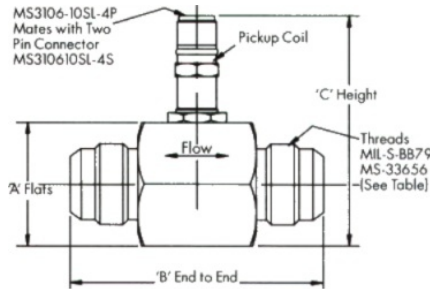
Bearing Type		Rotor Type		Endfitting Type		Material		Options	
Type	Use	Type	Use	Type	Use	Type	Use	Type	Use
Cryo Ball	CB	304 Nickel Liquid	NL	NPT	A	304SS	4	Hi-Temp	HT
Metal Ball	MB	17-4 PH-SS Liquid	PHL	FNPT*	FA	304L	4L	Mod.Carr	RF
Teflon Sleeve	TS	17-4 PH-SS 15°	PH15	AN Flare	B	316SS	6	Mnt. Boss	X
Graphitar Sleeve	GS	17-4 PH-SS 12°	PH12	150C	C	316LSS	6L		
Carbide Sleeve	CS	17-4 PH-SS 7°	PH7	150S	D				
Fluorisint Sleeve	FS			300C	E				
				300S	F				
				600C	J				
				600S	K				
				High Pressure*	H				
				Tube Fitting*	I				

*Overall lengths vary, contact us.

End Flanged (1/2"-12")	Line Size	150# ASA		300# ASA		400# ASA		600# ASA		900# ASA		1500# ASA		2500# ASA	
		A	B	A	B	A	B	A	B	A	B	A	B	A	B
1/4"-1/2"		5	3 1/2	5	3 3/4	5	3 3/4	5	3 3/4	7	4 3/4	7	4 3/4	7	5 1/4
5/8		5 1/2	3 1/2	5 1/2	3 3/4	5 1/2	3 3/4	5 1/2	3 3/4	7	4 3/4	7	4 3/4	7	5 1/4
3/4		5 1/2	3 7/8	5 1/2	4 5/8	5 1/2	4 5/8	5 1/2	4 5/8	7	5 1/8	7	5 1/8	7	5 1/2
1		5 1/2	4 1/4	5 1/2	4 7/8	5 1/2	4 7/8	5 1/2	4 7/8	8	5 7/8	8	5 7/8	8	6 1/4
1 1/4		6	4 5/8	6	5 1/4	6	5 1/4	6	5 1/4	8	6 1/4	8	6 1/4	8	7 1/4
1 1/2		6	5	6	6 1/8	6	6 1/8	6	6 1/8	9	7	9	7	9	8
2		6 1/2	6	6 1/2	6 1/2	6 1/2	6 1/2	6 1/2	6 1/2	9	7	9	7	9	8
2 1/2		7	7	7	7 1/2	7	7 1/2	7	7 1/2	10	9 5/8	10	9 5/8	10	10 1/2
3		10	7 1/2	10	8 1/4	10	8 1/4	10	8 1/4	10	9 1/2	10	10 1/2	11	12
3 1/2		12	8 1/2	12	9	12	9	12	9	-	-	-	-	-	-
4		12	9	12	10	12	10	12	10 3/4	12	11 1/2	12	12 1/4	12	14
5		14	10	14	11	14	11	14	13	14	13 3/4	14	15 1/2	16	19
6		14	11	14	12 1/2	14	12 1/2	14	14	14	15	14	15 1/2	16	19
8		16	13 1/2	16	15	16	15	16	16 1/2	16	18 1/2	16	19	18	21 3/4
10		20	16	20	17 1/2	20	17 1/2	20	20	20	21 1/2	20	23	22	26 1/2
12		24	19	24	20 1/2	24	20 1/2	24	22	24	24	24	26 1/2	24	30

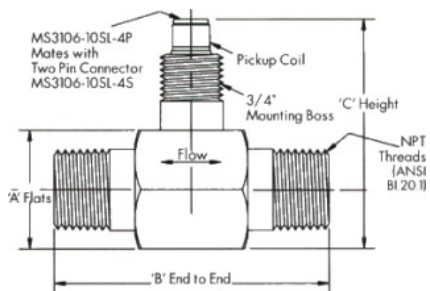


MS Flared Tube (sizes 1/8"-2")

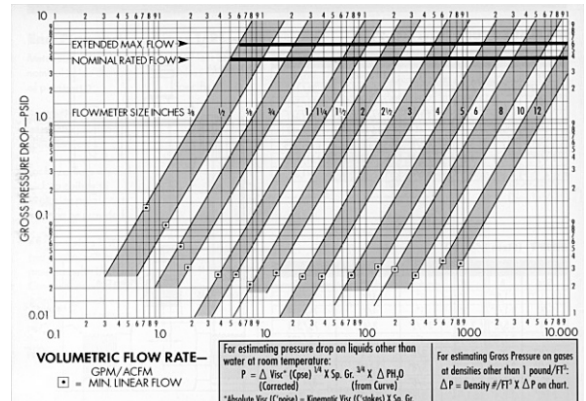
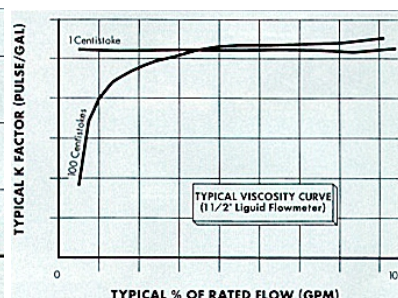
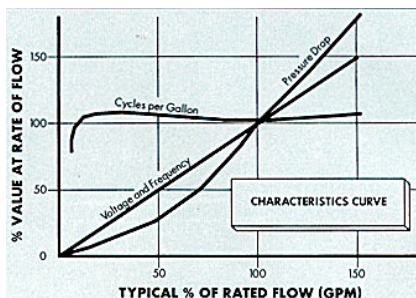


Size	DIMENSIONS (INCHES)			END CONNECTIONS	APPROX. WEIGHT (OZ.)
	A	B	C	FLARED TUBED	STAINLESS STEEL
1/8-1/2	11/8	29/16	3	3/4-16UNJF-3A	6
5/8	11/8	23/4	3	7/8-14UNJF-3A	12
3/4	15/8	31/4	3 1/2	11/16-12UNJ-3A	12
1	15/8	31/2	4	15/16-12UNJ-3A	22
1 1/4	2	37/8	4 3/8	15/8-12NJ-3A	28
1 1/2	2 1/8	43/8	4 5/8	17/8-NJ-3A	37
2	2 3/4	4 3/4	5 3/8	2 1/2-12UNJ-3A	48

MNPT Flared Tube (sizes 1/8"-3")



Size	DIMENSIONS (INCHES)			END CONNECTIONS	APPROX. WEIGHT (OZ.)
	A	B	C	MNPT	S. STEEL
1/8-1/2	11/8	3	3	1/2	6
5/8	11/8	3	3	1/2	12
3/4	15/8	3 1/4	3 1/2	3/4	12
1	15/8	3 1/2	4	1	22
1 1/4	2	37/8	4 3/8	1 1/4	28
1 1/2	2 1/8	43/8	4 5/8	1 1/2	37
2	2 3/4	4 3/4	5 3/8	2	48
2 1/2	3 1/4	6 1/16	5 3/8	2 1/2	55
3	3 1/2	10	5 3/8	3	160



*All dimensions in inches.

*All dimensions in inches.

*All dimensions in inches.